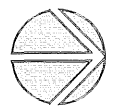


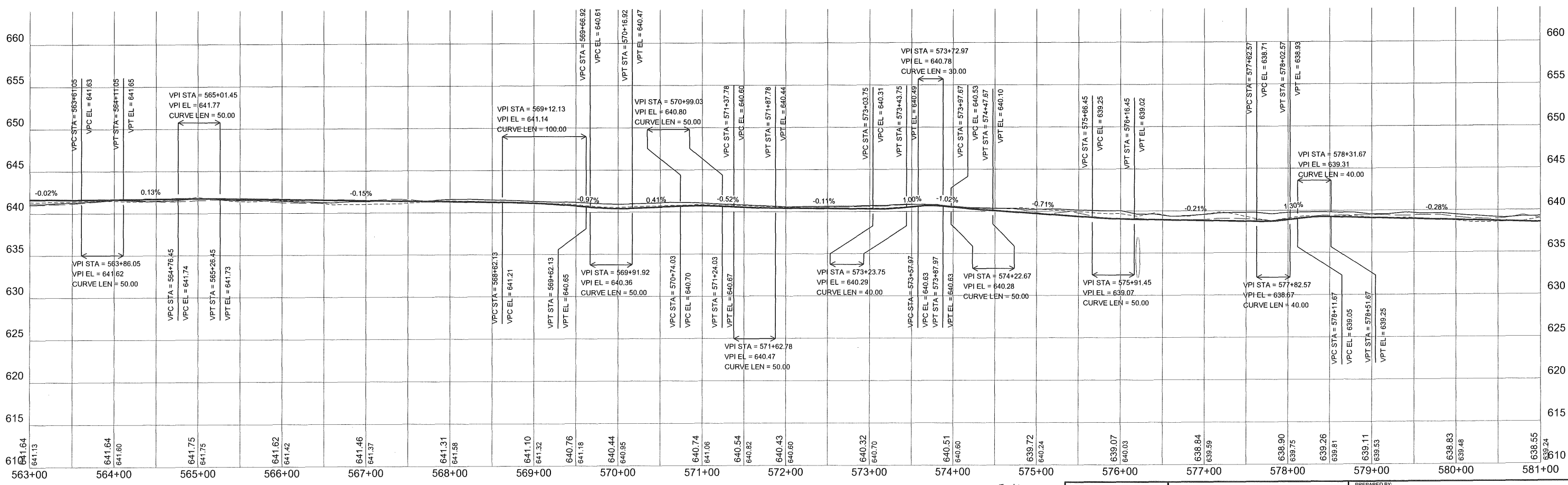
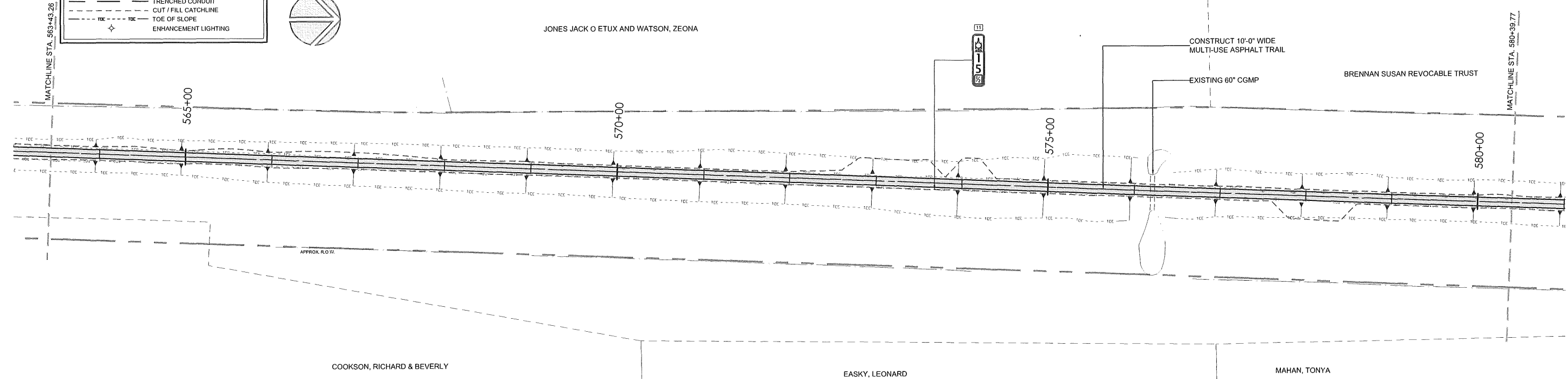
**PLAN LEGEND**

- FLOWLINE
- EXISTING RAILROAD R.O.W.
- - - SPLIT RAIL FENCE
- - - TOP OF SLOPE
- - - TRENCHED CONDUIT
- - - CUT / FILL CATCHLINE
- - - TOE OF SLOPE
- ◆ ENHANCEMENT LIGHTING

**SCALES (22x34):**  
 1" = 60' HOR  
 1" = 6' VER

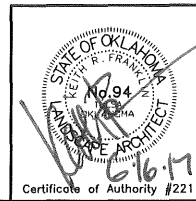
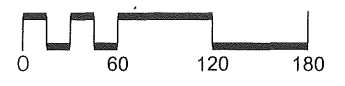


JONES JACK O ETUX AND WATSON, ZEONA



**PROFILE LEGEND**

- - - 7' OFFSET LEFT
- - - 7' OFFSET RIGHT
- - - EXISTING PROFILE
- PROPOSED PROFILE



Osage Prairie Trail Extension		
Design	JM	8/16
Drawn	JM/BB	8/16
Checked	JM/KF	6/17
Approved		
Squad	LPCI	

LANDPLAN CONSULTANTS  
 1110 West 23rd Street TULSA, OK 74107 918-584-6464

**PLAN AND PROFILE (4)**

F:\981 Osage Prairie Trail\Ext\Final\CAD BASE Files\Final\RoadCalc\33P&P Sheets\RCp30001R1.dwg, 6/15/2017 8:57:55 AM